

## Product datasheet for **TA330804**

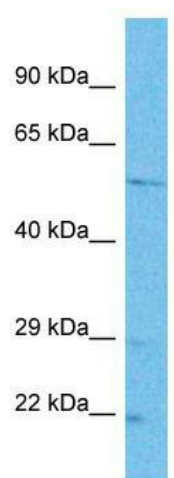
### TTC26 Rabbit Polyclonal Antibody

#### Product data:

Product Type:	Primary Antibodies
Applications:	WB
Recommended Dilution:	WB
Reactivity:	Human
Host:	Rabbit
Isotype:	IgG
Clonality:	Polyclonal
Immunogen:	The immunogen for Anti-TTC26 antibody is: synthetic peptide directed towards the N-terminal region of Human TTC26. Synthetic peptide located within the following region: LEFKRHVGEEDTNLWIGYCAFHLGDYKRALEEYENATKEENCNSEVWV
Formulation:	Liquid. Purified antibody supplied in 1x PBS buffer with 0.09% (w/v) sodium azide and 2% sucrose. <i>Note that this product is shipped as lyophilized powder to China customers.</i>
Conjugation:	Unconjugated
Storage:	Store at -20°C as received.
Stability:	Stable for 12 months from date of receipt.
Predicted Protein Size:	56 kDa
Gene Name:	tetratricopeptide repeat domain 26
Database Link:	<a href="#">NP_079202</a> <a href="#">Entrez Gene 79989 Human</a> <a href="#">A0AVF1</a>
Background:	TTC26 may play a critical role in ciliogenesis and normal cilia function.
Synonyms:	dyf-13; DYF13; IFT56
Note:	Human: 100%; Dog: 93%; Pig: 93%; Horse: 93%; Mouse: 93%; Rat: 86%; Guinea pig: 86%; Bovine: 79%; Rabbit: 79%



[View online »](#)

**Product images:**

Host: Rabbit; Target Name: TTC26; Sample  
Tissue: HepG2 Whole Cell lysates; Antibody  
Dilution: 1.0ug/ml