

## Product datasheet for **TA330802**

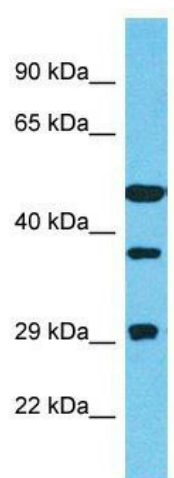
### TTC23 Rabbit Polyclonal Antibody

#### Product data:

Product Type:	Primary Antibodies
Applications:	WB
Recommended Dilution:	WB
Reactivity:	Human
Host:	Rabbit
Isotype:	IgG
Clonality:	Polyclonal
Immunogen:	The immunogen for Anti-TTC23 antibody is: synthetic peptide directed towards the C-terminal region of Human TTC23. Synthetic peptide located within the following region: LQIQTLLYGPQDKRTLATQQAMGMLSTAPKVASKPRQASKAKVAFCTSIP
Formulation:	Liquid. Purified antibody supplied in 1x PBS buffer with 0.09% (w/v) sodium azide and 2% sucrose. <i>Note that this product is shipped as lyophilized powder to China customers.</i>
Conjugation:	Unconjugated
Storage:	Store at -20°C as received.
Stability:	Stable for 12 months from date of receipt.
Predicted Protein Size:	49 kDa
Gene Name:	tetratricopeptide repeat domain 23
Database Link:	<a href="#">NP_075056</a> <a href="#">Entrez Gene 64927 Human</a> <a href="#">Q5W5X9</a>
Background:	The function of this protein remains unknown.
Synonyms:	HCC-8
Note:	Human: 100%



[View online »](#)

**Product images:**

Host: Rabbit; Target Name: TTC23; Sample Tissue: 721\_B Whole Cell lysates; Antibody Dilution: 1.0ug/ml; TTC23 is supported by BioGPS gene expression data to be expressed in 721\_B