

## Product datasheet for **TA330801**

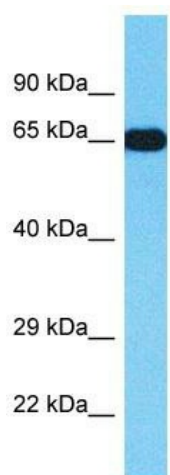
### TTC22 Rabbit Polyclonal Antibody

#### Product data:

Product Type:	Primary Antibodies
Applications:	WB
Recommended Dilution:	WB
Reactivity:	Human
Host:	Rabbit
Isotype:	IgG
Clonality:	Polyclonal
Immunogen:	The immunogen for Anti-TTC22 antibody is: synthetic peptide directed towards the N-terminal region of Human TTC22. Synthetic peptide located within the following region: AARCLAEQGYAHGFDVGCASPEERARGLAAGIALYDKALGYGQQIPMEEK
Formulation:	Liquid. Purified antibody supplied in 1x PBS buffer with 0.09% (w/v) sodium azide and 2% sucrose. <i>Note that this product is shipped as lyophilized powder to China customers.</i>
Conjugation:	Unconjugated
Storage:	Store at -20°C as received.
Stability:	Stable for 12 months from date of receipt.
Predicted Protein Size:	62 kDa
Gene Name:	tetratricopeptide repeat domain 22
Database Link:	<a href="#">NP_001107580</a> <a href="#">Entrez Gene 55001 Human</a> <a href="#">Q5TAA0</a>
Background:	This gene encodes a protein with seven tetratricopeptide (TPR) repeats. Tetratricopeptide repeat containing motifs are found in a variety of proteins and may mediate protein-protein interactions and chaperone activity. Alternatively spliced transcript variants have been found for this gene.
Synonyms:	FLJ20619
Note:	Rat: 100%; Human: 100%; Mouse: 100%; Horse: 93%; Bovine: 93%; Pig: 86%; Rabbit: 86%; Dog: 79%; Guinea pig: 79%



[View online »](#)

**Product images:**

Host: Rabbit

Target Name: TTC22

Sample Tissue: Placenta Lysate

Antibody Dilution: 1.0 $\mu$ g/ml

Host: Rabbit; Target Name: TTC22; Sample Tissue: Placenta lysates; Antibody Dilution: 1.0ug/ml