

Product datasheet for **TA330800**

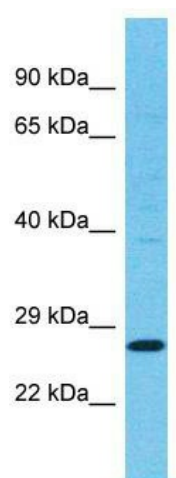
TSPAN11 Rabbit Polyclonal Antibody

Product data:

Product Type:	Primary Antibodies
Applications:	WB
Recommended Dilution:	WB
Reactivity:	Human
Host:	Rabbit
Isotype:	IgG
Clonality:	Polyclonal
Immunogen:	The immunogen for Anti-TSPAN11 antibody is: synthetic peptide directed towards the middle region of Human TSPAN11. Synthetic peptide located within the following region: HLNRTLAENYGQPGATQITASVDRLQQDFKCCGSNSSADWQHSTYILLRE
Formulation:	Liquid. Purified antibody supplied in 1x PBS buffer with 0.09% (w/v) sodium azide and 2% sucrose. <i>Note that this product is shipped as lyophilized powder to China customers.</i>
Conjugation:	Unconjugated
Storage:	Store at -20°C as received.
Stability:	Stable for 12 months from date of receipt.
Predicted Protein Size:	28 kDa
Gene Name:	tetraspanin 11
Database Link:	NP_001073978 Entrez Gene 441631 Human A1L157
Background:	The function of this protein remains unknown.
Synonyms:	VSSW1971
Note:	Human: 100%; Dog: 79%; Pig: 79%; Horse: 79%; Bovine: 79%; Guinea pig: 79%
Protein Families:	Transmembrane



[View online »](#)

Product images:

Host: Rabbit; Target Name: TSPAN11; Sample
Tissue: MCF7 Whole Cell lysates; Antibody
Dilution: 1.0ug/ml