

Product datasheet for **TA330798**

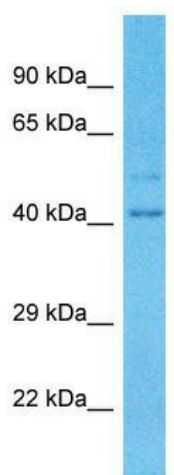
TRIM16L Rabbit Polyclonal Antibody

Product data:

| | |
|-------------------------|--|
| Product Type: | Primary Antibodies |
| Applications: | WB |
| Recommended Dilution: | WB |
| Reactivity: | Human |
| Host: | Rabbit |
| Isotype: | IgG |
| Clonality: | Polyclonal |
| Immunogen: | The immunogen for Anti-TRIM16L antibody is: synthetic peptide directed towards the N-terminal region of Human TRIM16L. Synthetic peptide located within the following region: RKAQANVMLFLEEKEQAALSQANGIKAHLEYRSAEMEKSKQELETMAAIS |
| Formulation: | Liquid. Purified antibody supplied in 1x PBS buffer with 0.09% (w/v) sodium azide and 2% sucrose. |
| Conjugation: | Unconjugated |
| Storage: | Store at -20°C as received. |
| Stability: | Stable for 12 months from date of receipt. |
| Predicted Protein Size: | 40 kDa |
| Gene Name: | tripartite motif containing 16-like |
| Database Link: | NP_001032407 Entrez Gene 147166 Human Q309B1 |
| Background: | The function of this protein remains unknown. |
| Synonyms: | TRIM70 |
| Note: | Human: 100%; Pig: 92%; Horse: 92%; Mouse: 92%; Rabbit: 92%; Guinea pig: 92%; Rat: 85%; Bovine: 77% |
| Protein Families: | Druggable Genome |



[View online »](#)

Product images:

Host: Rabbit; Target Name: TRIM16L; Sample
Tissue: Fetal Lung lysates; Antibody Dilution:
1.0ug/ml