

## Product datasheet for **TA330797**

### TRIM16 Rabbit Polyclonal Antibody

#### Product data:

Product Type:	Primary Antibodies
Applications:	WB
Recommended Dilution:	WB
Reactivity:	Human
Host:	Rabbit
Isotype:	IgG
Clonality:	Polyclonal
Immunogen:	The immunogen for Anti-TRIM16 antibody is: synthetic peptide directed towards the middle region of Human TRIM16. Synthetic peptide located within the following region: GAGTYVGLTCKGIDRKGEERNSCISGNNFWSLQWNGKEFTAWYSDMETP
Formulation:	Liquid. Purified antibody supplied in 1x PBS buffer with 0.09% (w/v) sodium azide and 2% sucrose. <i>Note that this product is shipped as lyophilized powder to China customers.</i>
Conjugation:	Unconjugated
Storage:	Store at -20°C as received.
Stability:	Stable for 12 months from date of receipt.
Predicted Protein Size:	38 kDa
Gene Name:	tripartite motif containing 16
Database Link:	<a href="#">NP_006461</a> <a href="#">Entrez Gene 10626 Human</a> <a href="#">O95361</a>
Background:	This gene was identified as an estrogen and anti-estrogen regulated gene in epithelial cells stably expressing estrogen receptor. The protein encoded by this gene contains two B box domains and a coiled-coiled region that are characteristic of the B box zinc finger protein family. The proteins of this family have been reported to be involved in a variety of biological processes including cell growth, differentiation and pathogenesis. Expression of this gene was detected in most tissues. Its function, however, has not yet been determined.
Synonyms:	EBBP

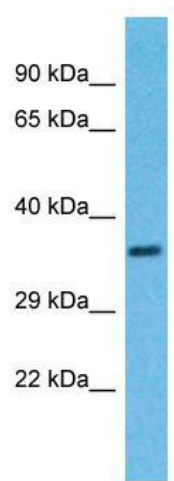


[View online »](#)

**Note:** Human: 100%; Dog: 86%; Rat: 86%; Mouse: 86%

**Protein Families:** Druggable Genome, Transcription Factors

**Product images:**



Host: Rabbit; Target Name: TRIM16; Sample Tissue: HeLa Whole Cell lysates; Antibody Dilution: 1.0ug/ml; TRIM16 is supported by BioGPS gene expression data to be expressed in HeLa