

Product datasheet for **TA330796**

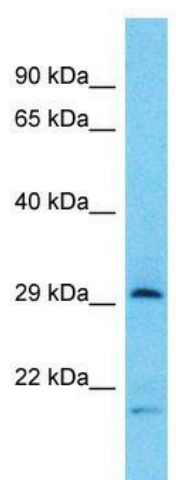
TPSB2 Rabbit Polyclonal Antibody

Product data:

Product Type:	Primary Antibodies
Applications:	WB
Recommended Dilution:	WB
Reactivity:	Human
Host:	Rabbit
Isotype:	IgG
Clonality:	Polyclonal
Immunogen:	The immunogen for Anti-TPSB2 antibody is: synthetic peptide directed towards the middle region of Human TPSB2. Synthetic peptide located within the following region: QALQRVGIVGGQEAPRSKWPWQVSLRVHGPYWMHFCGGSLIHPQWVLTAA
Formulation:	Liquid. Purified antibody supplied in 1x PBS buffer with 0.09% (w/v) sodium azide and 2% sucrose. <i>Note that this product is shipped as lyophilized powder to China customers.</i>
Conjugation:	Unconjugated
Storage:	Store at -20°C as received.
Stability:	Stable for 12 months from date of receipt.
Predicted Protein Size:	31 kDa
Gene Name:	tryptase beta 2 (gene/pseudogene)
Database Link:	NP_077078 Entrez Gene 64499 Human P20231
Background:	The function of this protein remains unknown.
Synonyms:	TPS2; tryptaseB; tryptaseC
Note:	Human: 100%; Rat: 92%
Protein Families:	Druggable Genome, Secreted Protein



[View online »](#)

Product images:

Host: Rabbit; Target Name: TPSB2; Sample
Tissue: HT1080 Whole Cell lysates; Antibody
Dilution: 1.0ug/ml