

Product datasheet for **TA330795**

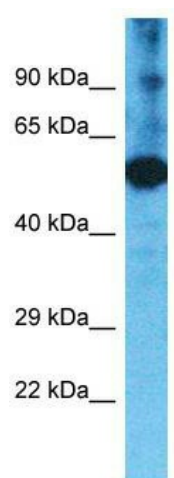
TMPRSS11F Rabbit Polyclonal Antibody

Product data:

Product Type:	Primary Antibodies
Applications:	WB
Recommended Dilution:	WB
Reactivity:	Human
Host:	Rabbit
Isotype:	IgG
Clonality:	Polyclonal
Immunogen:	The immunogen for Anti-TMPRSS11F antibody is: synthetic peptide directed towards the C-terminal region of Human TMPRSS11F. Synthetic peptide located within the following region: IILHENYHRETNENDIALVQLSTGVFEFSNIVQRVCLPDSSIKLPPKTSVF
Formulation:	Liquid. Purified antibody supplied in 1x PBS buffer with 0.09% (w/v) sodium azide and 2% sucrose. <i>Note that this product is shipped as lyophilized powder to China customers.</i>
Conjugation:	Unconjugated
Storage:	Store at -20°C as received.
Stability:	Stable for 12 months from date of receipt.
Predicted Protein Size:	49 kDa
Gene Name:	transmembrane protease, serine 11F
Database Link:	NP_997290 Entrez Gene 389208 Human Q6ZWK6
Background:	TMPRSS11F is a probable serine protease.
Synonyms:	FLJ16046
Note:	Dog: 100%; Horse: 100%; Human: 100%; Pig: 93%; Rabbit: 93%; Mouse: 86%; Bovine: 86%; Rat: 79%
Protein Families:	Druggable Genome, Transmembrane



[View online »](#)

Product images:

Host: Rabbit; Target Name: TMPRSS11F; Sample Tissue: Fetal Liver lysates; Antibody Dilution: 1.0ug/ml