

Product datasheet for **TA330794**

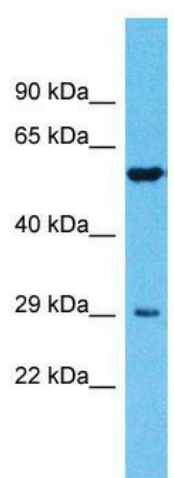
TMPRSS11E Rabbit Polyclonal Antibody

Product data:

Product Type:	Primary Antibodies
Applications:	WB
Recommended Dilution:	WB
Reactivity:	Human
Host:	Rabbit
Isotype:	IgG
Clonality:	Polyclonal
Immunogen:	The immunogen for Anti-TMPRSS11E antibody is: synthetic peptide directed towards the N-terminal region of Human TMPRSS11E. Synthetic peptide located within the following region: CIGLTVHYVRYNQKKTNYSTLSFTTDKLYAEFGREASNNFTEMSQRLE
Formulation:	Liquid. Purified antibody supplied in 1x PBS buffer with 0.09% (w/v) sodium azide and 2% sucrose. <i>Note that this product is shipped as lyophilized powder to China customers.</i>
Conjugation:	Unconjugated
Storage:	Store at -20°C as received.
Stability:	Stable for 12 months from date of receipt.
Predicted Protein Size:	25 kDa
Gene Name:	transmembrane protease, serine 11E
Database Link:	NP_054777 Entrez Gene 28983 Human Q9UL52
Background:	TMPRSS11E is a Serine protease which possesses both gelatinolytic and caseinolytic activities. It shows a preference for Arg in the P1 position.
Synonyms:	DESC1; TMPRSS11E2
Note:	Human: 100%; Pig: 93%; Horse: 93%; Dog: 92%; Rat: 86%; Guinea pig: 86%; Mouse: 79%
Protein Families:	Druggable Genome, Protease, Secreted Protein, Transmembrane



[View online »](#)

Product images:

Host: Rabbit; Target Name: TMPRSS11E; Sample
Tissue: Fetal Lung lysates; Antibody Dilution:
1.0ug/ml