

Product datasheet for **TA330793**

TMPRSS11B Rabbit Polyclonal Antibody

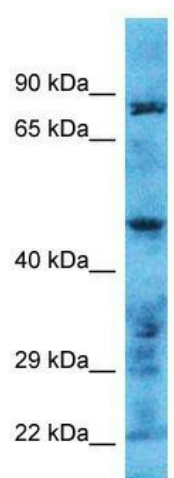
Product data:

| | |
|--------------------------------|--|
| Product Type: | Primary Antibodies |
| Applications: | WB |
| Recommended Dilution: | WB |
| Reactivity: | Human |
| Host: | Rabbit |
| Isotype: | IgG |
| Clonality: | Polyclonal |
| Immunogen: | The immunogen for Anti-TMPRSS11B antibody is: synthetic peptide directed towards the N-terminal region of Human TMPRSS11B. Synthetic peptide located within the following region: DNCENAASQASTNLSKDIETKMLNAFQNSSIYKEYVKSEVIKLLPNANGS |
| Formulation: | Liquid. Purified antibody supplied in 1x PBS buffer with 0.09% (w/v) sodium azide and 2% sucrose. <i>Note that this product is shipped as lyophilized powder to China customers.</i> |
| Conjugation: | Unconjugated |
| Storage: | Store at -20°C as received. |
| Stability: | Stable for 12 months from date of receipt. |
| Predicted Protein Size: | 46 kDa |
| Gene Name: | transmembrane protease, serine 11B |
| Database Link: | NP_872308 Entrez Gene 132724 Human Q86T26 |
| Background: | TMPRSS11B is a probable serine protease. |
| Synonyms: | DKFZp686L1818 |
| Note: | Human: 100%; Rabbit: 100%; Rat: 86%; Horse: 86% |
| Protein Families: | Druggable Genome, Transmembrane |



[View online »](#)

Product images:



Host: Rabbit; Target Name: TMPRSS11B; Sample Tissue: HeLa Whole Cell lysates; Antibody Dilution: 1.0ug/ml