

Product datasheet for **TA330792**

TMPRSS7 Rabbit Polyclonal Antibody

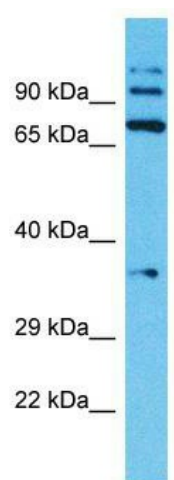
Product data:

Product Type:	Primary Antibodies
Applications:	WB
Recommended Dilution:	WB
Reactivity:	Human
Host:	Rabbit
Isotype:	IgG
Clonality:	Polyclonal
Immunogen:	The immunogen for Anti-TMPRSS7 antibody is: synthetic peptide directed towards the N-terminal region of Human TMPRSS7. Synthetic peptide located within the following region: LPEYRQKESREFLSVSRVQVINLVYTTSAFSKFYEQSVVADVSNNKGG
Formulation:	Liquid. Purified antibody supplied in 1x PBS buffer with 0.09% (w/v) sodium azide and 2% sucrose.
Conjugation:	Unconjugated
Storage:	Store at -20°C as received.
Stability:	Stable for 12 months from date of receipt.
Predicted Protein Size:	78 kDa
Gene Name:	transmembrane protease, serine 7
Database Link:	NP_001036040 Entrez Gene 344805 Human Q7RTY8
Background:	TMPRSS7 is a Serine protease which preferentially hydrolyzes peptides with Arg at the P1 position.
Synonyms:	B230219I23Rik; Gm1748; matriptase-3; transmembrane serine protease 7
Note:	Dog: 100%; Pig: 100%; Rat: 100%; Human: 100%; Mouse: 100%; Bovine: 100%; Guinea pig: 100%; Horse: 93%; Rabbit: 93%
Protein Families:	Druggable Genome



[View online »](#)

Product images:



Host: Rabbit; Target Name: TMPRSS7; Sample
Tissue: Jurkat Whole Cell lysates; Antibody
Dilution: 1.0ug/ml