

Product datasheet for **TA330791**

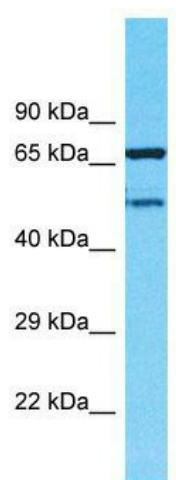
TMEM232 Rabbit Polyclonal Antibody

Product data:

Product Type:	Primary Antibodies
Applications:	WB
Recommended Dilution:	WB
Reactivity:	Human
Host:	Rabbit
Isotype:	IgG
Clonality:	Polyclonal
Immunogen:	The immunogen for Anti-TMEM232 antibody is: synthetic peptide directed towards the N-terminal region of Human TMEM232. Synthetic peptide located within the following region: HLSGERGHKSRPTFSITKEFILRFNQTSKEKEELLELARKIILRCKRK
Formulation:	Liquid. Purified antibody supplied in 1x PBS buffer with 0.09% (w/v) sodium azide and 2% sucrose.
Conjugation:	Unconjugated
Storage:	Store at -20°C as received.
Stability:	Stable for 12 months from date of receipt.
Predicted Protein Size:	55 kDa
Gene Name:	transmembrane protein 232
Database Link:	NP_001034852 Entrez Gene 642987 Human C9IQI7
Background:	The function of this protein remains unknown.
Synonyms:	DKFZp686G0585; FLJ35903; FLJ43080
Note:	Human: 100%; Dog: 86%; Pig: 79%; Bovine: 79%
Protein Families:	Transmembrane



[View online »](#)

Product images:


Host: Rabbit; Target Name: TMEM232; Sample
Tissue: MDA-MB-435S Whole Cell lysates;
Antibody Dilution: 1.0ug/ml