

Product datasheet for **TA330790**

TMEM215 Rabbit Polyclonal Antibody

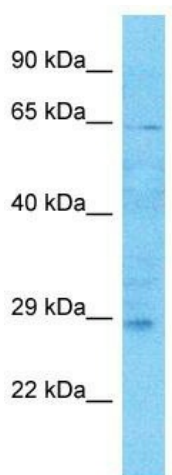
Product data:

Product Type:	Primary Antibodies
Applications:	WB
Recommended Dilution:	WB
Reactivity:	Human
Host:	Rabbit
Isotype:	IgG
Clonality:	Polyclonal
Immunogen:	The immunogen for Anti-TMEM215 antibody is: synthetic peptide directed towards the N-terminal region of Human TMEM215. Synthetic peptide located within the following region: WVRKLPFCFRKPKDKKEVVELLRTPSDLESGKGSDELAKKAGLRGKPPPQS
Formulation:	Liquid. Purified antibody supplied in 1x PBS buffer with 0.09% (w/v) sodium azide and 2% sucrose. <i>Note that this product is shipped as lyophilized powder to China customers.</i>
Conjugation:	Unconjugated
Storage:	Store at -20°C as received.
Stability:	Stable for 12 months from date of receipt.
Predicted Protein Size:	25 kDa
Gene Name:	transmembrane protein 215
Database Link:	NP_997723 Entrez Gene 401498 Human Q68D42
Background:	The function of this protein remains unknown.
Synonyms:	DKFZp686l2292; FLJ43330
Note:	Dog: 100%; Pig: 100%; Rat: 100%; Horse: 100%; Human: 100%; Mouse: 100%; Bovine: 100%; Rabbit: 100%; Guinea pig: 100%
Protein Families:	Transmembrane



[View online »](#)

Product images:



Host: Rabbit
Target Name: TMEM215
Sample Tissue: HCT15 Cell Lysate
Antibody Dilution: 1.0 μ g/ml

Host: Rabbit; Target Name: TMEM215; Sample Tissue: HCT15 Whole Cell lysates; Antibody Dilution: 1.0 μ g/ml