

Product datasheet for **TA330787**

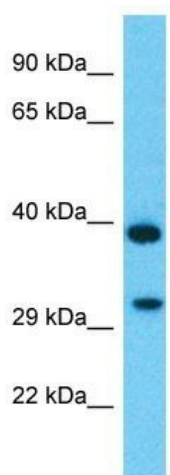
TMEM177 Rabbit Polyclonal Antibody

Product data:

Product Type:	Primary Antibodies
Applications:	WB
Recommended Dilution:	WB
Reactivity:	Human
Host:	Rabbit
Isotype:	IgG
Clonality:	Polyclonal
Immunogen:	The immunogen for Anti-TMEM177 antibody is: synthetic peptide directed towards the C-terminal region of Human TMEM177. Synthetic peptide located within the following region: AYACGGVEFYEKLLSGNLALRSLLGKDGEKLYTPSGNIVPRHLFRIKHLP
Formulation:	Liquid. Purified antibody supplied in 1x PBS buffer with 0.09% (w/v) sodium azide and 2% sucrose.
Conjugation:	Unconjugated
Storage:	Store at -20°C as received.
Stability:	Stable for 12 months from date of receipt.
Predicted Protein Size:	34 kDa
Gene Name:	transmembrane protein 177
Database Link:	NP_085054 Entrez Gene 80775 Human Q53S58
Background:	The function of this protein remains unknown.
Synonyms:	MGC10993
Note:	Rat: 100%; Human: 100%; Dog: 86%; Pig: 86%; Mouse: 86%; Guinea pig: 86%; Horse: 79%; Rabbit: 79%



[View online »](#)

Product images:


Host: Rabbit
 Target Name: TMEM177
 Sample Tissue: COLO205 Cell Lysate
 Antibody Dilution: 1.0µg/ml

Host: Rabbit; Target Name: TMEM177; Sample
 Tissue: COLO205 Whole Cell lysates; Antibody
 Dilution: 1.0ug/ml