

## Product datasheet for **TA330786**

### TMEM169 Rabbit Polyclonal Antibody

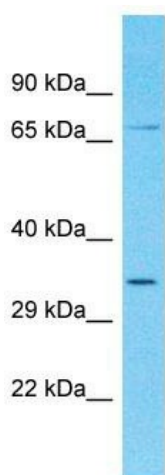
#### Product data:

Product Type:	Primary Antibodies
Applications:	WB
Recommended Dilution:	WB
Reactivity:	Human
Host:	Rabbit
Isotype:	IgG
Clonality:	Polyclonal
Immunogen:	The immunogen for Anti-TMEM169 antibody is: synthetic peptide directed towards the C-terminal region of Human TMEM169. Synthetic peptide located within the following region: RDMEKGF CGWLCSKLGLED CSPYSIVELLESDNISSTLSNKDPIQEVETS
Formulation:	Liquid. Purified antibody supplied in 1x PBS buffer with 0.09% (w/v) sodium azide and 2% sucrose. <i>Note that this product is shipped as lyophilized powder to China customers.</i>
Conjugation:	Unconjugated
Storage:	Store at -20°C as received.
Stability:	Stable for 12 months from date of receipt.
Predicted Protein Size:	32 kDa
Gene Name:	transmembrane protein 169
Database Link:	<a href="#">NP_612399</a> <a href="#">Entrez Gene 92691 Human Q96HH4</a>
Background:	The function of this protein remains unknown.
Synonyms:	DKFZp781L2456; FLJ34263
Note:	Human: 100%; Rat: 93%; Horse: 93%; Rabbit: 93%; Dog: 86%; Pig: 86%; Mouse: 86%; Bovine: 86%; Guinea pig: 86%
Protein Families:	Transmembrane



[View online »](#)

## Product images:



Host: Rabbit  
Target Name: TMEM169  
Sample Tissue: Fetal Kidney Lysate  
Antibody Dilution: 1.0 $\mu$ g/ml

Host: Rabbit; Target Name: TMEM169; Sample  
Tissue: Fetal Kidney lysates; Antibody Dilution:  
1.0ug/ml