

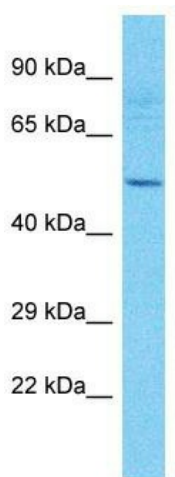
## Product datasheet for **TA330784**

### TMEM151A Rabbit Polyclonal Antibody

#### Product data:

Product Type:	Primary Antibodies
Applications:	WB
Recommended Dilution:	WB
Reactivity:	Human
Host:	Rabbit
Isotype:	IgG
Clonality:	Polyclonal
Immunogen:	The immunogen for Anti-TMEM151A antibody is: synthetic peptide directed towards the middle region of Human TMEM151A. Synthetic peptide located within the following region: RQITRYRNGDAYTTTQVYHERADSRTARGEFDYSAHGVRDVSKELVGLAE
Formulation:	Liquid. Purified antibody supplied in 1x PBS buffer with 0.09% (w/v) sodium azide and 2% sucrose.
Conjugation:	Unconjugated
Storage:	Store at -20°C as received.
Stability:	Stable for 12 months from date of receipt.
Predicted Protein Size:	51 kDa
Gene Name:	transmembrane protein 151A
Database Link:	<a href="#">NP_694998</a> <a href="#">Entrez Gene 256472 Human</a> <a href="#">Q8N4L1</a>
Background:	The function of this protein remains unknown.
Synonyms:	TMEM151
Note:	Dog: 100%; Pig: 100%; Rat: 100%; Horse: 100%; Human: 100%; Mouse: 100%; Bovine: 100%; Rabbit: 100%; Zebrafish: 100%; Guinea pig: 100%


[View online »](#)

**Product images:**

Host: Rabbit  
Target Name: TMEM151A  
Sample Tissue: HepG2 Cell Lysate  
Antibody Dilution: 1.0 $\mu$ g/ml

Host: Rabbit; Target Name: TMEM151A; Sample  
Tissue: HepG2 Whole Cell lysates; Antibody  
Dilution: 1.0 $\mu$ g/ml