

Product datasheet for **TA330781**

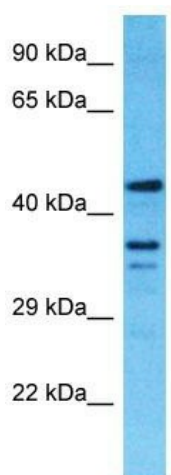
TMEM116 Rabbit Polyclonal Antibody

Product data:

Product Type:	Primary Antibodies
Applications:	WB
Recommended Dilution:	WB
Reactivity:	Human
Host:	Rabbit
Isotype:	IgG
Clonality:	Polyclonal
Immunogen:	The immunogen for Anti-TMEM116 antibody is: synthetic peptide directed towards the C-terminal region of Human TMEM116. Synthetic peptide located within the following region: QRVRFYPVAFFCCWGPVILMIKLTQPDTKLHMALYVLQALTATSQGL
Formulation:	Liquid. Purified antibody supplied in 1x PBS buffer with 0.09% (w/v) sodium azide and 2% sucrose. <i>Note that this product is shipped as lyophilized powder to China customers.</i>
Conjugation:	Unconjugated
Storage:	Store at -20°C as received.
Stability:	Stable for 12 months from date of receipt.
Predicted Protein Size:	37 kDa
Gene Name:	transmembrane protein 116
Database Link:	NP_612350 Entrez Gene 89894 Human Q8NCL8
Background:	The function of this protein remains unknown.
Synonyms:	FLJ90167
Note:	Pig: 100%; Rat: 100%; Human: 100%; Guinea pig: 100%; Dog: 93%; Horse: 93%; Bovine: 92%; Rabbit: 86%
Protein Families:	Druggable Genome, Transmembrane



[View online »](#)

Product images:

Host: Rabbit

Target Name: TMEM116

Sample Tissue: NCI-H226 Cell Lysate

Antibody Dilution: 1.0 μ g/ml

Host: Rabbit; Target Name: TMEM116; Sample
Tissue: NCI-H226 Whole Cell lysates; Antibody
Dilution: 1.0 μ g/ml