

Product datasheet for **TA330780**

TMEM105 Rabbit Polyclonal Antibody

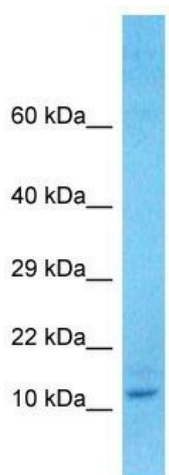
Product data:

Product Type:	Primary Antibodies
Applications:	WB
Recommended Dilution:	WB
Reactivity:	Human
Host:	Rabbit
Isotype:	IgG
Clonality:	Polyclonal
Immunogen:	The immunogen for Anti-TMEM105 antibody is: synthetic peptide directed towards the N-terminal region of Human TMEM105. Synthetic peptide located within the following region: IGQLIYLLTWSLFTAWLRPPTLLQGPRTPSPQGSPPRSPWGDCAEPSCLCE
Formulation:	Liquid. Purified antibody supplied in 1x PBS buffer with 0.09% (w/v) sodium azide and 2% sucrose. <i>Note that this product is shipped as lyophilized powder to China customers.</i>
Conjugation:	Unconjugated
Storage:	Store at -20°C as received.
Stability:	Stable for 12 months from date of receipt.
Predicted Protein Size:	14 kDa
Gene Name:	transmembrane protein 105
Database Link:	NP_848615 Entrez Gene 284186 Human
Background:	The function of this protein remains unknown.
Synonyms:	FLJ38792
Note:	Human: 100%
Protein Families:	Transmembrane



[View online »](#)

Product images:



Host: Rabbit

Target Name: TMEM105

Sample Tissue: OVCAR-3 Cell Lysate

Antibody Dilution: 1.0µg/ml

Host: Rabbit; Target Name: TMEM105; Sample Tissue: OVCAR-3 Whole cell lysates; Antibody Dilution: 1.0ug/ml