

## Product datasheet for **TA330779**

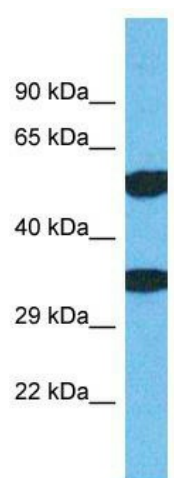
### TMEM68 Rabbit Polyclonal Antibody

#### Product data:

Product Type:	Primary Antibodies
Applications:	WB
Recommended Dilution:	WB
Reactivity:	Human
Host:	Rabbit
Isotype:	IgG
Clonality:	Polyclonal
Immunogen:	The immunogen for Anti-TMEM68 antibody is: synthetic peptide directed towards the N-terminal region of Human TMEM68. Synthetic peptide located within the following region: MIDKNQTCGVGQDSVPYMICLIHILEEWFGVEQLEDYLNFANYLLWVFTP
Formulation:	Liquid. Purified antibody supplied in 1x PBS buffer with 0.09% (w/v) sodium azide and 2% sucrose. <i>Note that this product is shipped as lyophilized powder to China customers.</i>
Conjugation:	Unconjugated
Storage:	Store at -20°C as received.
Stability:	Stable for 12 months from date of receipt.
Predicted Protein Size:	35 kDa
Gene Name:	transmembrane protein 68
Database Link:	<a href="#">NP_689630</a> <a href="#">Entrez Gene 137695 Human</a> <a href="#">Q96MH6</a>
Background:	The function of this protein remains unknown.
Synonyms:	FLJ32370; MGC87778
Note:	Human: 100%; Dog: 92%; Pig: 85%; Rat: 85%; Rabbit: 85%; Horse: 79%; Mouse: 79%; Guinea pig: 77%
Protein Families:	Transmembrane



[View online »](#)

**Product images:**

Host: Rabbit; Target Name: TMEM68; Sample  
Tissue: Jurkat Whole Cell lysates; Antibody  
Dilution: 1.0ug/ml