

Product datasheet for **TA330778**

TMEM39B Rabbit Polyclonal Antibody

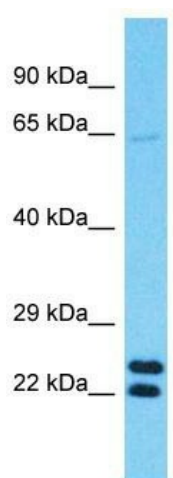
Product data:

Product Type:	Primary Antibodies
Applications:	WB
Recommended Dilution:	WB
Reactivity:	Human
Host:	Rabbit
Isotype:	IgG
Clonality:	Polyclonal
Immunogen:	The immunogen for Anti-TMEM39B antibody is: synthetic peptide directed towards the N-terminal region of Human TMEM39B. Synthetic peptide located within the following region: PLCEPGSSGGSSGSHTSSASVTSVRSRTRSSSGTGLSSPPLATQTVVPLQ
Formulation:	Liquid. Purified antibody supplied in 1x PBS buffer with 0.09% (w/v) sodium azide and 2% sucrose.
Conjugation:	Unconjugated
Storage:	Store at -20°C as received.
Stability:	Stable for 12 months from date of receipt.
Predicted Protein Size:	21 kDa
Gene Name:	transmembrane protein 39B
Database Link:	NP_060526 Entrez Gene 55116 Human Q9GZU3
Background:	The function of this protein remains unknown.
Synonyms:	RP11-277A4.3
Note:	Human: 100%; Horse: 93%; Dog: 86%; Pig: 86%; Rat: 86%; Bovine: 86%; Guinea pig: 86%; Rabbit: 79%
Protein Families:	Transmembrane



[View online »](#)

Product images:



Host: Rabbit
Target Name: TMEM39B
Sample Tissue: U937 Cell Lysate
Antibody Dilution: 1.0 μ g/ml

Host: Rabbit; Target Name: TMEM39B; Sample
Tissue: U937 Whole Cell lysates; Antibody
Dilution: 1.0 μ g/ml