

Product datasheet for **TA330777**

TMEM26 Rabbit Polyclonal Antibody

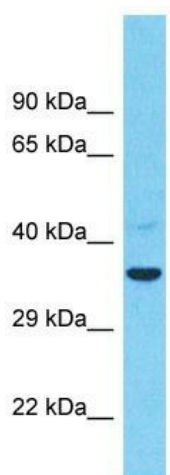
Product data:

Product Type:	Primary Antibodies
Applications:	WB
Recommended Dilution:	WB
Reactivity:	Human
Host:	Rabbit
Isotype:	IgG
Clonality:	Polyclonal
Immunogen:	The immunogen for Anti-TMEM26 antibody is: synthetic peptide directed towards the C-terminal region of Human TMEM26. Synthetic peptide located within the following region: RSQSEGLKGEHGCRAQTSESGPSQRDWQNESKEGLAIPLRGSPVTSDSSH
Formulation:	Liquid. Purified antibody supplied in 1x PBS buffer with 0.09% (w/v) sodium azide and 2% sucrose. <i>Note that this product is shipped as lyophilized powder to China customers.</i>
Conjugation:	Unconjugated
Storage:	Store at -20°C as received.
Stability:	Stable for 12 months from date of receipt.
Predicted Protein Size:	40 kDa
Gene Name:	transmembrane protein 26
Database Link:	NP_848600 Entrez Gene 219623 Human Q6ZUK4
Background:	The function of this protein remains unknown.
Synonyms:	DKFZp686D09128; MGC35010
Note:	Human: 100%
Protein Families:	Transmembrane



[View online »](#)

Product images:



Host: Rabbit

Target Name: TMEM26

Sample Tissue: COLO205 Cell Lysate

Antibody Dilution: 1.0 μ g/ml

Host: Rabbit; Target Name: TMEM26; Sample Tissue: COLO205 Whole Cell lysates; Antibody Dilution: 1.0 μ g/ml