

## Product datasheet for **TA330775**

### TMED5 Rabbit Polyclonal Antibody

#### Product data:

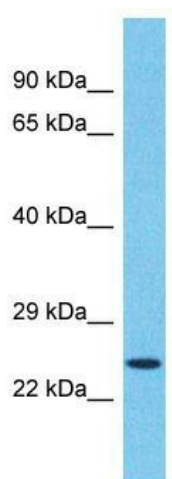
Product Type:	Primary Antibodies
Applications:	WB
Recommended Dilution:	WB
Reactivity:	Human
Host:	Rabbit
Isotype:	IgG
Clonality:	Polyclonal
Immunogen:	The immunogen for Anti-TMED5 antibody is: synthetic peptide directed towards the C-terminal region of Human TMED5. Synthetic peptide located within the following region: INSIKSRLSKSGHIQTLLRAFEARDRNIQESNFDRVNFWSMVNLLVMMVVV
Formulation:	Liquid. Purified antibody supplied in 1x PBS buffer with 0.09% (w/v) sodium azide and 2% sucrose. <i>Note that this product is shipped as lyophilized powder to China customers.</i>
Conjugation:	Unconjugated
Storage:	Store at -20°C as received.
Stability:	Stable for 12 months from date of receipt.
Predicted Protein Size:	23 kDa
Gene Name:	transmembrane p24 trafficking protein 5
Database Link:	<a href="#">NP_057124</a> <a href="#">Entrez Gene 50999 Human</a> <a href="#">Q9Y3A6</a>
Background:	TMED5 is a potential role in vesicular protein trafficking, mainly in the early secretory pathway. It is required for the maintenance of the Golgi apparatus; involved in protein exchange between Golgi stacks during assembly. It probably not required for COPI-vesicle-mediated retrograde transport.
Synonyms:	CGI-100; p24g2; p28
Note:	Dog: 100%; Pig: 100%; Rat: 100%; Horse: 100%; Human: 100%; Mouse: 100%; Bovine: 100%; Rabbit: 100%; Guinea pig: 100%; Zebrafish: 79%



[View online »](#)

Protein Families: Transmembrane

### Product images:



Host: Rabbit; Target Name: TMED5; Sample Tissue: Jurkat Whole Cell lysates; Antibody Dilution: 1.0ug/ml