

Product datasheet for **TA330773**

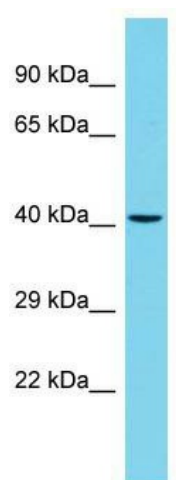
WBSCR16 (RCC1L) Rabbit Polyclonal Antibody

Product data:

Product Type:	Primary Antibodies
Applications:	WB
Recommended Dilution:	WB
Reactivity:	Human
Host:	Rabbit
Isotype:	IgG
Clonality:	Polyclonal
Immunogen:	The immunogen for Anti-WBSCR16 antibody is: synthetic peptide directed towards the N-terminal region of Human WBSCR16. Synthetic peptide located within the following region: GYGFTLLSSKTADVTKVWGMGLNKDSQLGFHRSRKDKTRGYEYVLEPSPV
Formulation:	Liquid. Purified antibody supplied in 1x PBS buffer with 0.09% (w/v) sodium azide and 2% sucrose.
Conjugation:	Unconjugated
Storage:	Store at -20°C as received.
Stability:	Stable for 12 months from date of receipt.
Predicted Protein Size:	40 kDa
Gene Name:	RCC1 like
Database Link:	NP_110425 Entrez Gene 81554 Human Q96I51
Background:	This gene encodes an RCC1-like G-exchanging factor. It is deleted in Williams syndrome, a multisystem developmental disorder caused by the deletion of contiguous genes at 7q11.23.
Synonyms:	DKFZp434D0421; MGC44931; MGC189739
Note:	Pig: 100%; Rat: 100%; Human: 100%; Mouse: 100%; Bovine: 100%; Dog: 93%; Guinea pig: 93%; Horse: 86%; Rabbit: 79%



[View online »](#)

Product images:


Host: Rabbit; Target Name: WBSCR16; Sample Tissue: HeLa Whole Cell lysates; Antibody Dilution: 1.0ug/ml; WBSCR16 is supported by BioGPS gene expression data to be expressed in HeLa