

## Product datasheet for **TA330772**

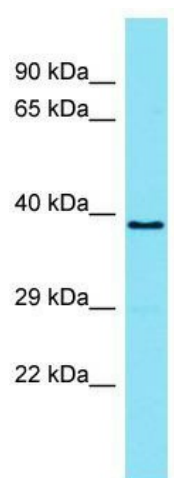
### TMEM121 Rabbit Polyclonal Antibody

#### Product data:

Product Type:	Primary Antibodies
Applications:	WB
Recommended Dilution:	WB
Reactivity:	Human
Host:	Rabbit
Isotype:	IgG
Clonality:	Polyclonal
Immunogen:	The immunogen for Anti-TMEM121 antibody is: synthetic peptide directed towards the N-terminal region of Human TMEM121. Synthetic peptide located within the following region: LTTLVIMGSMVAVMDAYLVEQNQGPRKIGVCIIVLVGDVCFLLVLRVAVW
Formulation:	Liquid. Purified antibody supplied in 1x PBS buffer with 0.09% (w/v) sodium azide and 2% sucrose. <i>Note that this product is shipped as lyophilized powder to China customers.</i>
Conjugation:	Unconjugated
Storage:	Store at -20°C as received.
Stability:	Stable for 12 months from date of receipt.
Predicted Protein Size:	35 kDa
Gene Name:	transmembrane protein 121
Database Link:	<a href="#">NP_079544</a> <a href="#">Entrez Gene 80757 Human Q9BTD3</a>
Background:	The function of this protein remains unknown.
Synonyms:	hole
Note:	Dog: 100%; Pig: 100%; Rat: 100%; Human: 100%; Mouse: 100%; Bovine: 100%; Zebrafish: 100%; Guinea pig: 93%
Protein Families:	Transmembrane



[View online »](#)

**Product images:**

Host: Rabbit; Target Name: TMEM121; Sample  
Tissue: ACHN Whole Cell lysates; Antibody  
Dilution: 1.0ug/ml