

Product datasheet for **TA330771**

AARSD1 (PTGES3L-AARSD1) Rabbit Polyclonal Antibody

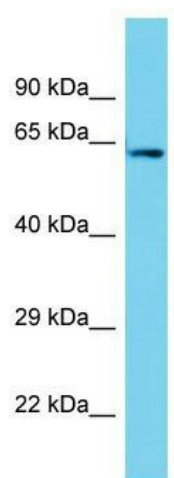
Product data:

Product Type:	Primary Antibodies
Applications:	WB
Recommended Dilution:	WB
Reactivity:	Human
Host:	Rabbit
Isotype:	IgG
Clonality:	Polyclonal
Immunogen:	The immunogen for Anti-PTGES3L-AARSD1 antibody is: synthetic peptide directed towards the C-terminal region of Human PTGES3L-AARSD1. Synthetic peptide located within the following region: LLFLTVGDEKGGGLFLLAGPPASVETLGPVAVLEGGKAGKKGRFQGKA
Formulation:	Liquid. Purified antibody supplied in 1x PBS buffer with 0.09% (w/v) sodium azide and 2% sucrose. <i>Note that this product is shipped as lyophilized powder to China customers.</i>
Conjugation:	Unconjugated
Storage:	Store at -20°C as received.
Stability:	Stable for 12 months from date of receipt.
Predicted Protein Size:	58 kDa
Gene Name:	PTGES3L-AARSD1 readthrough
Database Link:	NP_079543 Entrez Gene 100885850 Human Q9BTE6
Background:	This locus represents naturally occurring readthrough transcription between the neighboring PTGES3L (prostaglandin E synthase 3 (cytosolic)-like) and AARSD1(alanyl-tRNA synthetase domain containing 1) genes on chromosome 17. The readthrough transcript encodes a fusion protein that shares sequence identity with each individual gene product.
Synonyms:	MGC2744
Note:	Dog: 100%; Rat: 100%; Horse: 100%; Human: 100%; Mouse: 100%; Bovine: 100%; Rabbit: 100%; Pig: 93%; Guinea pig: 93%; Zebrafish: 79%



[View online »](#)

Product images:



Host: Rabbit; Target Name: PTGES3L-AARSD1;
Sample Tissue: HepG2 Whole Cell lysates;
Antibody Dilution: 1.0ug/ml