

Product datasheet for **TA330770**

AARSD1 (PTGES3L-AARSD1) Rabbit Polyclonal Antibody

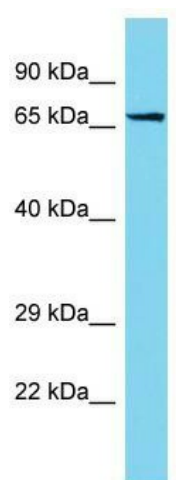
Product data:

| | |
|-------------------------|---|
| Product Type: | Primary Antibodies |
| Applications: | WB |
| Recommended Dilution: | WB |
| Reactivity: | Human |
| Host: | Rabbit |
| Isotype: | IgG |
| Clonality: | Polyclonal |
| Immunogen: | The immunogen for Anti-PTGES3L-AARSD1 antibody is: synthetic peptide directed towards the N-terminal region of Human PTGES3L-AARSD1. Synthetic peptide located within the following region: ELYNEIEFYAKVNSKDSQDKRSSRSITCFVRKWKEKVAWPRLTKEDIKPV |
| Formulation: | Liquid. Purified antibody supplied in 1x PBS buffer with 0.09% (w/v) sodium azide and 2% sucrose. <i>Note that this product is shipped as lyophilized powder to China customers.</i> |
| Conjugation: | Unconjugated |
| Storage: | Store at -20°C as received. |
| Stability: | Stable for 12 months from date of receipt. |
| Predicted Protein Size: | 65 kDa |
| Gene Name: | PTGES3L-AARSD1 readthrough |
| Database Link: | NP_001129514 Entrez Gene 100885850 Human Q9BTE6 |
| Background: | This locus represents naturally occurring readthrough transcription between the neighboring PTGES3L (prostaglandin E synthase 3 (cytosolic)-like) and AARSD1(alanyl-tRNA synthetase domain containing 1) genes on chromosome 17. The readthrough transcript encodes a fusion protein that shares sequence identity with each individual gene product. |
| Synonyms: | MGC2744 |
| Note: | Human: 100%; Dog: 93%; Pig: 93%; Rat: 93%; Horse: 93%; Mouse: 93%; Rabbit: 93%; Guinea pig: 93%; Bovine: 86% |



[View online »](#)

Product images:



Host: Rabbit; Target Name: PTGES3L-AARSD1;
Sample Tissue: Jurkat Whole Cell lysates;
Antibody Dilution: 1.0ug/ml