

Product datasheet for **TA330768**

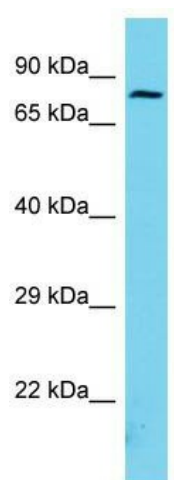
ARMC9 Rabbit Polyclonal Antibody

Product data:

Product Type:	Primary Antibodies
Applications:	WB
Recommended Dilution:	WB
Reactivity:	Human
Host:	Rabbit
Isotype:	IgG
Clonality:	Polyclonal
Immunogen:	The immunogen for Anti-ARMC9 antibody is: synthetic peptide directed towards the N-terminal region of Human ARMC9. Synthetic peptide located within the following region: DSFAQKLEFYLHIHFAIYLLKYSVGRPDKEELDEKISYFKTYLETKGAAL
Formulation:	Liquid. Purified antibody supplied in 1x PBS buffer with 0.09% (w/v) sodium azide and 2% sucrose.
Conjugation:	Unconjugated
Storage:	Store at -20°C as received.
Stability:	Stable for 12 months from date of receipt.
Predicted Protein Size:	75 kDa
Gene Name:	armadillo repeat containing 9
Database Link:	NP_079415 Entrez Gene 80210 Human Q7Z3E5
Background:	The function of this protein remains unknown.
Synonyms:	ARM; KU-MEL-1; NS21
Note:	Human: 100%; Pig: 93%; Horse: 86%; Rat: 83%; Rabbit: 83%; Dog: 79%; Bovine: 79%



[View online »](#)

Product images:

Host: Rabbit; Target Name: ARMC9; Sample
Tissue: Jurkat Whole Cell lysates; Antibody
Dilution: 1.0ug/ml