

Product datasheet for **TA330767**

TEDC2 Rabbit Polyclonal Antibody

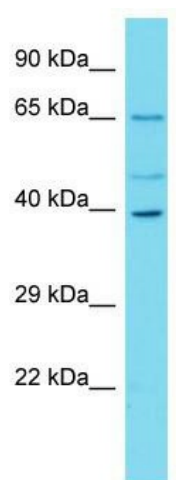
Product data:

Product Type:	Primary Antibodies
Applications:	WB
Recommended Dilution:	WB
Reactivity:	Human
Host:	Rabbit
Isotype:	IgG
Clonality:	Polyclonal
Immunogen:	The immunogen for Anti-C16orf59 antibody is: synthetic peptide directed towards the N-terminal region of Human C16orf59. Synthetic peptide located within the following region: EKAVRVRRGITKAGERDKAPSLKRSIVTSSGTTASAPPHSPGQAGGHAS
Formulation:	Liquid. Purified antibody supplied in 1x PBS buffer with 0.09% (w/v) sodium azide and 2% sucrose. <i>Note that this product is shipped as lyophilized powder to China customers.</i>
Conjugation:	Unconjugated
Storage:	Store at -20°C as received.
Stability:	Stable for 12 months from date of receipt.
Predicted Protein Size:	47 kDa
Gene Name:	chromosome 16 open reading frame 59
Database Link:	NP_079384 Entrez Gene 80178 Human Q7L2K0
Background:	The function of this protein remains unknown.
Synonyms:	FLJ13909
Note:	Human: 100%



[View online »](#)

Product images:



Host: Rabbit; Target Name: C16orf59; Sample
Tissue: HeLa Whole cell lysates; Antibody Dilution:
1.0ug/ml