

## Product datasheet for **TA330766**

### **C4orf29 (ABHD18) Rabbit Polyclonal Antibody**

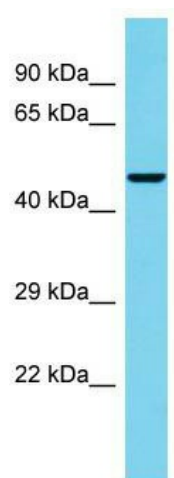
#### **Product data:**

<b>Product Type:</b>	Primary Antibodies
<b>Applications:</b>	WB
<b>Recommended Dilution:</b>	WB
<b>Reactivity:</b>	Human
<b>Host:</b>	Rabbit
<b>Isotype:</b>	IgG
<b>Clonality:</b>	Polyclonal
<b>Immunogen:</b>	The immunogen for Anti-C4orf29 antibody is: synthetic peptide directed towards the C-terminal region of Human C4orf29. Synthetic peptide located within the following region: GYTSRNPQSYHLLSKEQSRNSLRKESLIFMKGVMDECTHVANFSVPVDPS
<b>Formulation:</b>	Liquid. Purified antibody supplied in 1x PBS buffer with 0.09% (w/v) sodium azide and 2% sucrose. <i>Note that this product is shipped as lyophilized powder to China customers.</i>
<b>Conjugation:</b>	Unconjugated
<b>Storage:</b>	Store at -20°C as received.
<b>Stability:</b>	Stable for 12 months from date of receipt.
<b>Predicted Protein Size:</b>	44 kDa
<b>Gene Name:</b>	abhydrolase domain containing 18
<b>Database Link:</b>	<a href="#">NP_001034806</a> <a href="#">Entrez Gene 80167 Human</a>
<b>Background:</b>	The function of this protein remains unknown.
<b>Synonyms:</b>	FLJ21106; MGC149227; MGC149228
<b>Note:</b>	Human: 100%; Rat: 86%; Dog: 79%; Pig: 79%; Bovine: 79%; Rabbit: 77%



[View online »](#)

## Product images:



Host: Rabbit; Target Name: C4orf29; Sample  
Tissue: 293T Whole Cell lysates; Antibody  
Dilution: 1.0ug/ml