

Product datasheet for **TA330761**

DGLUCY Rabbit Polyclonal Antibody

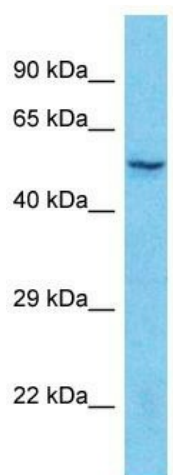
Product data:

Product Type:	Primary Antibodies
Applications:	WB
Recommended Dilution:	WB
Reactivity:	Human
Host:	Rabbit
Isotype:	IgG
Clonality:	Polyclonal
Immunogen:	The immunogen for Anti-C14orf159 antibody is: synthetic peptide directed towards the C-terminal region of Human C14orf159. Synthetic peptide located within the following region: AKKIPGISSTGVGDGGNELGMGKVKEAVRRHIRHGDVIACDVEADFAVIA
Formulation:	Liquid. Purified antibody supplied in 1x PBS buffer with 0.09% (w/v) sodium azide and 2% sucrose. <i>Note that this product is shipped as lyophilized powder to China customers.</i>
Conjugation:	Unconjugated
Storage:	Store at -20°C as received.
Stability:	Stable for 12 months from date of receipt.
Predicted Protein Size:	63 kDa
Gene Name:	chromosome 14 open reading frame 159
Database Link:	NP_079228 Entrez Gene 80017 Human Q7Z3D6
Background:	The function of this protein remains unknown.
Synonyms:	C14orf160; DKFZp686I02128; FLJ20950; FLJ39943; FLJ39975
Note:	Rat: 100%; Horse: 100%; Human: 100%; Mouse: 100%; Zebrafish: 79%



[View online »](#)

Product images:



Host: Rabbit
Target Name: C14orf159
Sample Tissue: Jurkat Cell Lysate
Antibody Dilution: 1.0µg/ml

Host: Rabbit; Target Name: C14orf159; Sample
Tissue: Jurkat Whole Cell lysates; Antibody
Dilution: 1.0ug/ml