

Product datasheet for **TA330756**

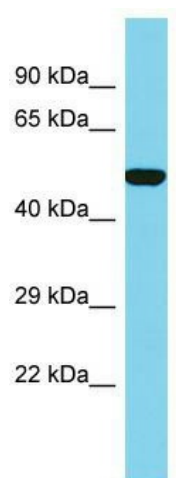
SLC35E1 Rabbit Polyclonal Antibody

Product data:

Product Type:	Primary Antibodies
Applications:	WB
Recommended Dilution:	WB
Reactivity:	Human
Host:	Rabbit
Isotype:	IgG
Clonality:	Polyclonal
Immunogen:	The immunogen for Anti-SLC35E1 antibody is: synthetic peptide directed towards the C-terminal region of Human SLC35E1. Synthetic peptide located within the following region: MMTAILGVFLYNKTKYDANQQARKHLLPVTADLSSKERHRSPLEKPHNG
Formulation:	Liquid. Purified antibody supplied in 1x PBS buffer with 0.09% (w/v) sodium azide and 2% sucrose. <i>Note that this product is shipped as lyophilized powder to China customers.</i>
Conjugation:	Unconjugated
Storage:	Store at -20°C as received.
Stability:	Stable for 12 months from date of receipt.
Predicted Protein Size:	44 kDa
Gene Name:	solute carrier family 35 member E1
Database Link:	NP_079157 Entrez Gene 79939 Human Q96K37
Background:	SLC35E1 is a putative transporter.
Synonyms:	DKFZp564G0462; FLJ14251; FLJ36689; MGC44954
Note:	Human: 100%; Pig: 93%; Horse: 93%; Bovine: 93%; Dog: 86%
Protein Families:	Transmembrane



[View online »](#)

Product images:

Host: Rabbit; Target Name: SLC35E1; Sample Tissue: 293T Whole Cell lysates; Antibody Dilution: 1.0ug/ml; There is BioGPS gene expression data showing that SLC35E1 is expressed in HEK293T