

Product datasheet for **TA330755**

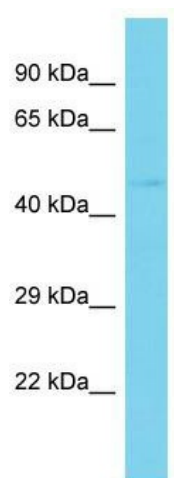
MAB21L4 Rabbit Polyclonal Antibody

Product data:

Product Type:	Primary Antibodies
Applications:	WB
Recommended Dilution:	WB
Reactivity:	Human
Host:	Rabbit
Isotype:	IgG
Clonality:	Polyclonal
Immunogen:	The immunogen for Anti-C2orf54 antibody is: synthetic peptide directed towards the C-terminal region of Human C2orf54. Synthetic peptide located within the following region: LKALLQLPASDPTYWATAYFDVLLDKFQVFNIQDKDRISAMQSIFQKTRT
Formulation:	Liquid. Purified antibody supplied in 1x PBS buffer with 0.09% (w/v) sodium azide and 2% sucrose. <i>Note that this product is shipped as lyophilized powder to China customers.</i>
Conjugation:	Unconjugated
Storage:	Store at -20°C as received.
Stability:	Stable for 12 months from date of receipt.
Predicted Protein Size:	49 kDa
Gene Name:	chromosome 2 open reading frame 54
Database Link:	NP_001078906 Entrez Gene 79919 Human Q08AI8
Background:	The function of this protein remains unknown.
Synonyms:	FLJ22671; MGC150431; MGC150432
Note:	Pig: 100%; Horse: 100%; Human: 100%; Dog: 93%; Rat: 93%; Mouse: 93%; Guinea pig: 77%



[View online »](#)

Product images:

Host: Rabbit; Target Name: C2orf54; Sample
Tissue: Hela Whole cell lysates; Antibody Dilution:
1.0ug/ml