

Product datasheet for **TA330754**

TCTN2 Rabbit Polyclonal Antibody

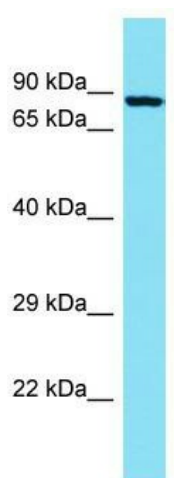
Product data:

Product Type:	Primary Antibodies
Applications:	WB
Recommended Dilution:	WB
Reactivity:	Human
Host:	Rabbit
Isotype:	IgG
Clonality:	Polyclonal
Immunogen:	The immunogen for Anti-TCTN2 antibody is: synthetic peptide directed towards the N-terminal region of Human TCTN2. Synthetic peptide located within the following region: VIPGAVLEVTVRWKRGLDWCSSNETDSFSESPCILQTLLVSASHNSSCSA
Formulation:	Liquid. Purified antibody supplied in 1x PBS buffer with 0.09% (w/v) sodium azide and 2% sucrose. <i>Note that this product is shipped as lyophilized powder to China customers.</i>
Conjugation:	Unconjugated
Storage:	Store at -20°C as received.
Stability:	Stable for 12 months from date of receipt.
Predicted Protein Size:	73 kDa
Gene Name:	tectonic family member 2
Database Link:	NP_001137322 Entrez Gene 79867 Human Q96GX1
Background:	This gene encodes a type I membrane protein that belongs to the tectonic family. Studies in mice suggest that this protein may be involved in hedgehog signaling, and essential for ciliogenesis. Mutations in this gene are associated with Meckel syndrome type 8. Alternatively spliced transcript variants encoding different isoforms have been found for this gene.
Synonyms:	C12orf38; JBTS24; MKS8; TECT2
Note:	Human: 100%; Pig: 92%; Horse: 92%; Rat: 77%; Mouse: 77%



[View online »](#)

Product images:



Host: Rabbit; Target Name: TCTN2; Sample
Tissue: A549 Whole Cell lysates; Antibody
Dilution: 1.0ug/ml