

Product datasheet for **TA330753**

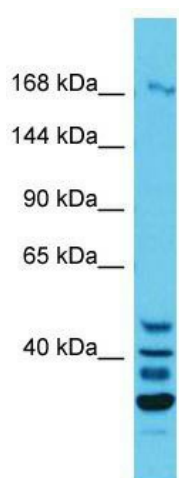
QSER1 Rabbit Polyclonal Antibody

Product data:

Product Type:	Primary Antibodies
Applications:	WB
Recommended Dilution:	WB
Reactivity:	Human
Host:	Rabbit
Isotype:	IgG
Clonality:	Polyclonal
Immunogen:	The immunogen for Anti-QSER1 antibody is: synthetic peptide directed towards the C-terminal region of Human QSER1. Synthetic peptide located within the following region: LNLHLDQSFKNALESFPELTIITRDSKAKSGGTAISKIKMNGKAYNKKTL
Formulation:	Liquid. Purified antibody supplied in 1x PBS buffer with 0.09% (w/v) sodium azide and 2% sucrose. <i>Note that this product is shipped as lyophilized powder to China customers.</i>
Conjugation:	Unconjugated
Storage:	Store at -20°C as received.
Stability:	Stable for 12 months from date of receipt.
Predicted Protein Size:	168 kDa
Gene Name:	glutamine and serine rich 1
Database Link:	NP_079050 Entrez Gene 79832 Human Q2KHR3
Background:	The function of this protein remains unknown.
Synonyms:	FLJ21924; glutamine and serine rich 1
Note:	Human: 100%; Pig: 93%; Rat: 93%; Horse: 93%; Mouse: 93%; Dog: 86%; Bovine: 86%; Rabbit: 86%; Guinea pig: 86%



[View online »](#)

Product images:

Host: Rabbit; Target Name: QSER1; Sample Tissue: HepG2 Whole Cell lysates; Antibody Dilution: 1.0ug/ml; QSER1 is supported by BioGPS gene expression data to be expressed in HepG2