

Product datasheet for **TA330752**

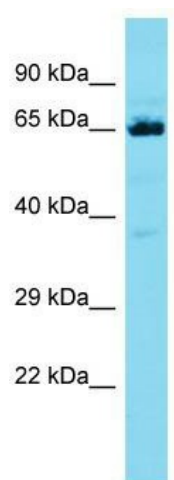
CCDC48 (EFCC1) Rabbit Polyclonal Antibody

Product data:

Product Type:	Primary Antibodies
Applications:	WB
Recommended Dilution:	WB
Reactivity:	Human
Host:	Rabbit
Isotype:	IgG
Clonality:	Polyclonal
Immunogen:	The immunogen for Anti-CCDC48 antibody is: synthetic peptide directed towards the C-terminal region of Human CCDC48. Synthetic peptide located within the following region: LEAELQRYRSEDSQLPTPQLANPEPGDKSNEPEDAGTRDPDPTPEGAWQS
Formulation:	Liquid. Purified antibody supplied in 1x PBS buffer with 0.09% (w/v) sodium azide and 2% sucrose.
Conjugation:	Unconjugated
Storage:	Store at -20°C as received.
Stability:	Stable for 12 months from date of receipt.
Predicted Protein Size:	65 kDa
Gene Name:	EF-hand and coiled-coil domain containing 1
Database Link:	NP_079044 Entrez Gene 79825 Human Q9HA90
Background:	The function of this protein remains unknown.
Synonyms:	C3orf73; CCDC48
Note:	Human: 100%; Rat: 77%



[View online »](#)

Product images:

Host: Rabbit; Target Name: CCDC48; Sample
Tissue: HT1080 Whole Cell lysates; Antibody
Dilution: 1.0ug/ml