

Product datasheet for **TA330751**

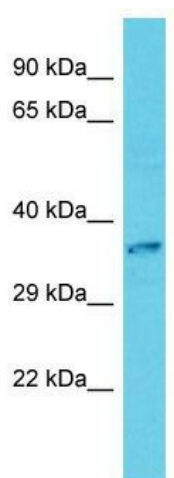
CLNMT (CAMKMT) Rabbit Polyclonal Antibody

Product data:

Product Type:	Primary Antibodies
Applications:	WB
Recommended Dilution:	WB
Reactivity:	Human
Host:	Rabbit
Isotype:	IgG
Clonality:	Polyclonal
Immunogen:	The immunogen for Anti-CAMKMT antibody is: synthetic peptide directed towards the C-terminal region of Human CAMKMT. Synthetic peptide located within the following region: QFCNLAEKAGFCIQRHENYDEHISNFHSLKKNPDIYEENLHYPLLLIL
Formulation:	Liquid. Purified antibody supplied in 1x PBS buffer with 0.09% (w/v) sodium azide and 2% sucrose.
Conjugation:	Unconjugated
Storage:	Store at -20°C as received.
Stability:	Stable for 12 months from date of receipt.
Predicted Protein Size:	35 kDa
Gene Name:	calmodulin-lysine N-methyltransferase
Database Link:	NP_079042 Entrez Gene 79823 Human Q7Z624
Background:	This gene encodes a class I protein methyltransferase that acts in the formation of trimethyllysine in calmodulin. The protein contains a AdoMet-binding motif and may play a role in calcium-dependent signaling.
Synonyms:	C2orf34; Cam; CaM KMT; CLNMT; KMT
Note:	Dog: 100%; Pig: 100%; Rat: 100%; Horse: 100%; Human: 100%; Bovine: 100%; Rabbit: 100%; Guinea pig: 93%; Mouse: 92%



[View online »](#)

Product images:

Host: Rabbit; Target Name: CAMKMT; Sample Tissue: HepG2 Whole Cell lysates; Antibody Dilution: 1.0ug/ml; CAMKMT is supported by BioGPS gene expression data to be expressed in HepG2