

Product datasheet for **TA330750**

SHCBP1 Rabbit Polyclonal Antibody

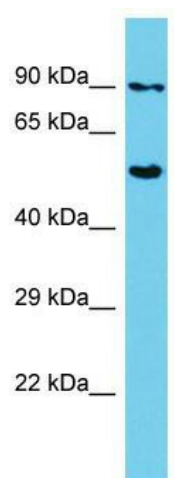
Product data:

Product Type:	Primary Antibodies
Applications:	WB
Recommended Dilution:	WB
Reactivity:	Human
Host:	Rabbit
Isotype:	IgG
Clonality:	Polyclonal
Immunogen:	The immunogen for Anti-SHCBP1 antibody is: synthetic peptide directed towards the C-terminal region of Human SHCBP1. Synthetic peptide located within the following region: IPKISMVNNIIHNNEGYGVVLVKPTIFSDLQENAEDGTEENKALKIQTSG
Formulation:	Liquid. Purified antibody supplied in 1x PBS buffer with 0.09% (w/v) sodium azide and 2% sucrose. <i>Note that this product is shipped as lyophilized powder to China customers.</i>
Conjugation:	Unconjugated
Storage:	Store at -20°C as received.
Stability:	Stable for 12 months from date of receipt.
Predicted Protein Size:	75 kDa
Gene Name:	SHC binding and spindle associated 1
Database Link:	NP_079021 Entrez Gene 79801 Human Q8NEM2
Background:	SHCBP1 may play a role in signaling pathways governing cellular proliferation, cell growth and differentiation. It may be a component of a novel signaling pathway downstream of Shc.
Synonyms:	PAL
Note:	Human: 100%; Pig: 93%; Rabbit: 86%; Bovine: 79%



[View online »](#)

Product images:



Host: Rabbit; Target Name: SHCBP1; Sample
Tissue: HepG2 Whole Cell lysates; Antibody
Dilution: 1.0ug/ml