

Product datasheet for **TA330749**

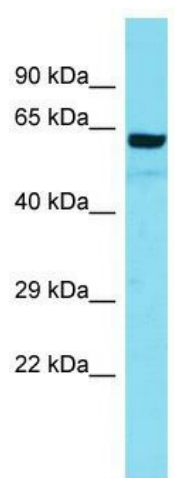
ARMC5 Rabbit Polyclonal Antibody

Product data:

Product Type:	Primary Antibodies
Applications:	WB
Recommended Dilution:	WB
Reactivity:	Human
Host:	Rabbit
Isotype:	IgG
Clonality:	Polyclonal
Immunogen:	The immunogen for Anti-ARMC5 antibody is: synthetic peptide directed towards the N-terminal region of Human ARMC5. Synthetic peptide located within the following region: GEAGEEEEEEGREAASWDFPEERTPERAQGGSFRLRSWLISEGYATGPDD
Formulation:	Liquid. Purified antibody supplied in 1x PBS buffer with 0.09% (w/v) sodium azide and 2% sucrose. <i>Note that this product is shipped as lyophilized powder to China customers.</i>
Conjugation:	Unconjugated
Storage:	Store at -20°C as received.
Stability:	Stable for 12 months from date of receipt.
Predicted Protein Size:	63 kDa
Gene Name:	armadillo repeat containing 5
Database Link:	NP_079018 Entrez Gene 79798 Human Q96C12
Background:	The function of this protein remains unknown.
Synonyms:	AIMAH2
Note:	Human: 100%; Dog: 93%; Pig: 86%; Rat: 86%; Horse: 86%; Bovine: 86%; Guinea pig: 86%; Rabbit: 85%



[View online »](#)

Product images:

Host: Rabbit; Target Name: ARMC5; Sample
Tissue: THP-1 Whole Cell lysates; Antibody
Dilution: 1.0ug/ml