

## Product datasheet for **TA330748**

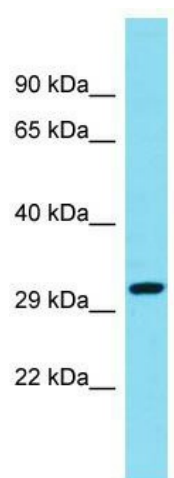
### CCDC82 Rabbit Polyclonal Antibody

#### Product data:

Product Type:	Primary Antibodies
Applications:	WB
Recommended Dilution:	WB
Reactivity:	Human
Host:	Rabbit
Isotype:	IgG
Clonality:	Polyclonal
Immunogen:	The immunogen for Anti-CCDC82 antibody is: synthetic peptide directed towards the N-terminal region of Human CCDC82. Synthetic peptide located within the following region: RVDWRRTKRSSISQLLDSDEELDSEEFDSDEELDSDEFENDEELDSNKG
Formulation:	Liquid. Purified antibody supplied in 1x PBS buffer with 0.09% (w/v) sodium azide and 2% sucrose.
Conjugation:	Unconjugated
Storage:	Store at -20°C as received.
Stability:	Stable for 12 months from date of receipt.
Predicted Protein Size:	28 kDa
Gene Name:	coiled-coil domain containing 82
Database Link:	<a href="#">NP_079001</a> <a href="#">Entrez Gene 79780 Human</a> <a href="#">Q8N450</a>
Background:	The function of this protein remains unknown.
Synonyms:	HSPC048
Note:	Human: 100%; Yeast: 83%



[View online »](#)

**Product images:**

Host: Rabbit; Target Name: CCDC82; Sample  
Tissue: ACHN Whole cell lysates; Antibody  
Dilution: 1.0ug/ml