

## Product datasheet for TA330747

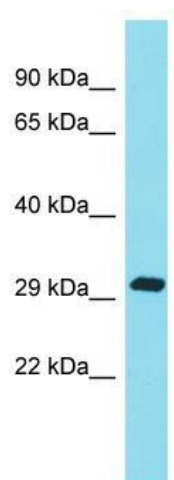
### C15orf29 (KATNBL1) Rabbit Polyclonal Antibody

#### Product data:

Product Type:	Primary Antibodies
Applications:	WB
Recommended Dilution:	WB
Reactivity:	Human
Host:	Rabbit
Isotype:	IgG
Clonality:	Polyclonal
Immunogen:	The immunogen for Anti-KATNBL1 antibody is: synthetic peptide directed towards the N-terminal region of Human KATNBL1. Synthetic peptide located within the following region: RTVGQTVKSPDKLRKVIYRRKKVHHFPNPNPCYRKKQSPGSGGCDMANKEN
Formulation:	Liquid. Purified antibody supplied in 1x PBS buffer with 0.09% (w/v) sodium azide and 2% sucrose.
Conjugation:	Unconjugated
Storage:	Store at -20°C as received.
Stability:	Stable for 12 months from date of receipt.
Predicted Protein Size:	34 kDa
Gene Name:	katanin regulatory subunit B1 like 1
Database Link:	<a href="#">NP_078989</a> <a href="#">Entrez Gene 79768 Human</a> <a href="#">Q9H079</a>
Background:	The function of this protein remains unknown.
Synonyms:	C15orf29
Note:	Human: 100%; Dog: 93%; Horse: 93%; Rat: 92%; Mouse: 92%; Pig: 86%; Bovine: 86%; Rabbit: 86%; Guinea pig: 86%


[View online »](#)

## Product images:



Host: Rabbit; Target Name: KATNBL1; Sample  
Tissue: COLO205 Whole Cell lysates; Antibody  
Dilution: 1.0ug/ml