

Product datasheet for **TA330745**

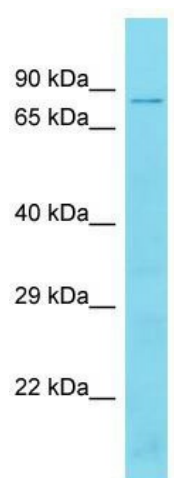
Tbc1d17 Rabbit Polyclonal Antibody

Product data:

Product Type:	Primary Antibodies
Applications:	WB
Recommended Dilution:	WB
Reactivity:	Mouse
Host:	Rabbit
Isotype:	IgG
Clonality:	Polyclonal
Immunogen:	The immunogen for Anti-Tbc1d17 antibody is: synthetic peptide directed towards the middle region of Mouse Tbc1d17. Synthetic peptide located within the following region: FCGFMELVHGNFEESQETMKRQLGQLLLLLLRVLDQPLCDFLDSQDSGSLC
Formulation:	Liquid. Purified antibody supplied in 1x PBS buffer with 0.09% (w/v) sodium azide and 2% sucrose. <i>Note that this product is shipped as lyophilized powder to China customers.</i>
Conjugation:	Unconjugated
Storage:	Store at -20°C as received.
Stability:	Stable for 12 months from date of receipt.
Predicted Protein Size:	72 kDa
Gene Name:	TBC1 domain family, member 17
Database Link:	NP_001036120 Entrez Gene 233204 Mouse Q8BYH7
Background:	Tbc1d17 may act as a GTPase-activating protein for Rab family protein(s).
Synonyms:	BC017607; MGC27642
Note:	Pig: 100%; Human: 100%; Guinea pig: 100%; Dog: 93%; Rat: 93%; Horse: 93%; Mouse: 93%; Bovine: 93%; Goat: 80%; Zebrafish: 77%



[View online »](#)

Product images:

Host: Rabbit; Target Name: Tbc1d17; Sample
Tissue: Mouse Thymus lysates; Antibody Dilution:
1.0ug/ml