

## Product datasheet for **TA330743**

### NOL9 Rabbit Polyclonal Antibody

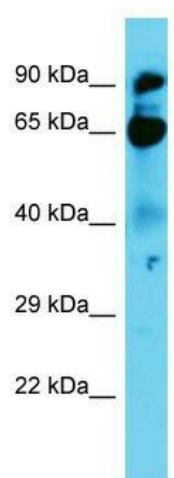
#### Product data:

Product Type:	Primary Antibodies
Applications:	WB
Recommended Dilution:	WB
Reactivity:	Human
Host:	Rabbit
Isotype:	IgG
Clonality:	Polyclonal
Immunogen:	The immunogen for Anti-NOL9 antibody is: synthetic peptide directed towards the N-terminal region of Human NOL9. Synthetic peptide located within the following region: AARRPNTATPSPISPASEPESEPELESASSCHRPLLIPPVRPVGPR
Formulation:	Liquid. Purified antibody supplied in 1x PBS buffer with 0.09% (w/v) sodium azide and 2% sucrose. <i>Note that this product is shipped as lyophilized powder to China customers.</i>
Conjugation:	Unconjugated
Storage:	Store at -20°C as received.
Stability:	Stable for 12 months from date of receipt.
Predicted Protein Size:	79 kDa
Gene Name:	nucleolar protein 9
Database Link:	<a href="#">NP_078930</a> <a href="#">Entrez Gene 79707 Human</a> <a href="#">Q5SY16</a>
Background:	NOL9 is a polynucleotide 5'-kinase involved in rRNA processing. The kinase activity is required for the processing of the 32S precursor into 5.8S and 28S rRNAs, more specifically for the generation of the major 5.8S(S) form. In vitro, it has both DNA and RNA 5'-kinase activities and probably binds RNA.
Synonyms:	Grc3; NET6
Note:	Human: 100%; Rabbit: 90%; Yeast: 85%; Mouse: 83%; Dog: 82%; Rat: 77%



[View online »](#)

## Product images:



Host: Rabbit; Target Name: NOL9; Sample Tissue: A549 Whole Cell lysates; Antibody Dilution: 1.0ug/ml