

## Product datasheet for TA330742

### MSANTD2 Rabbit Polyclonal Antibody

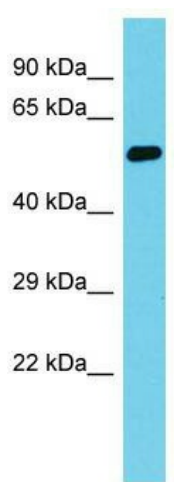
#### Product data:

<b>Product Type:</b>	Primary Antibodies
<b>Applications:</b>	WB
<b>Recommended Dilution:</b>	WB
<b>Reactivity:</b>	Human
<b>Host:</b>	Rabbit
<b>Isotype:</b>	IgG
<b>Clonality:</b>	Polyclonal
<b>Immunogen:</b>	The immunogen for Anti-MSANTD2 antibody is: synthetic peptide directed towards the N-terminal region of Human MSANTD2. Synthetic peptide located within the following region: LAELGYERTPSQCRERIKELESDGSTMEDYSQEDWGNHSQDLHGYPTDQE
<b>Formulation:</b>	Liquid. Purified antibody supplied in 1x PBS buffer with 0.09% (w/v) sodium azide and 2% sucrose.
<b>Conjugation:</b>	Unconjugated
<b>Storage:</b>	Store at -20°C as received.
<b>Stability:</b>	Stable for 12 months from date of receipt.
<b>Predicted Protein Size:</b>	55 kDa
<b>Gene Name:</b>	Myb/SANT DNA binding domain containing 2
<b>Database Link:</b>	<a href="#">NP_078907</a> <a href="#">Entrez Gene 79684 Human</a> <a href="#">Q6PIR3</a>
<b>Background:</b>	The function of this protein remains unknown.
<b>Synonyms:</b>	C11orf61



**Note:** Pig: 100%; Rat: 100%; Human: 100%; Mouse: 100%; Rabbit: 100%; Zebrafish: 100%; Guinea pig: 100%;  
Horse: 93%; Bovine: 93%; Dog: 86%

**Product images:**



Host: Rabbit; Target Name: MSANTD2; Sample  
Tissue: Fetal Heart lysates; Antibody Dilution:  
1.0ug/ml