

Product datasheet for **TA330741**

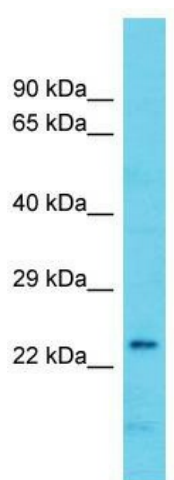
ARMC7 Rabbit Polyclonal Antibody

Product data:

Product Type:	Primary Antibodies
Applications:	WB
Recommended Dilution:	WB
Reactivity:	Human
Host:	Rabbit
Isotype:	IgG
Clonality:	Polyclonal
Immunogen:	The immunogen for Anti-ARMC7 antibody is: synthetic peptide directed towards the N-terminal region of Human ARMC7. Synthetic peptide located within the following region: LFLDSLSEENETLVEFAIGGLCNLCPDRANKEHILHAGGVPLIINCLSSP
Formulation:	Liquid. Purified antibody supplied in 1x PBS buffer with 0.09% (w/v) sodium azide and 2% sucrose.
Conjugation:	Unconjugated
Storage:	Store at -20°C as received.
Stability:	Stable for 12 months from date of receipt.
Predicted Protein Size:	21 kDa
Gene Name:	armadillo repeat containing 7
Database Link:	NP_078861 Entrez Gene 79637 Human Q9H6L4
Background:	The function of this protein remains unknown.
Synonyms:	FLJ22160
Note:	Human: 100%; Rabbit: 93%; Dog: 86%; Rat: 86%; Pig: 85%; Bovine: 85%; Guinea pig: 85%; Horse: 77%; Mouse: 77%



[View online »](#)

Product images:

Host: Rabbit; Target Name: ARMC7; Sample
Tissue: U937 Whole Cell lysates; Antibody
Dilution: 1.0ug/ml