

Product datasheet for **TA330740**

ARMC7 Rabbit Polyclonal Antibody

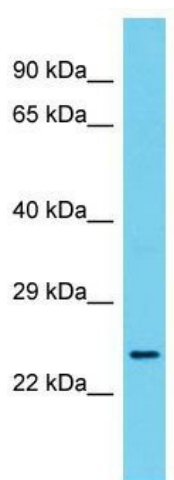
Product data:

Product Type:	Primary Antibodies
Applications:	WB
Recommended Dilution:	WB
Reactivity:	Human
Host:	Rabbit
Isotype:	IgG
Clonality:	Polyclonal
Immunogen:	The immunogen for Anti-ARMC7 antibody is: synthetic peptide directed towards the N-terminal region of Human ARMC7. Synthetic peptide located within the following region: MAQKPKVDPHVGRGLGYLQALVTEFQETQSQDAKEQVLANLANFAYDPSNY
Formulation:	Liquid. Purified antibody supplied in 1x PBS buffer with 0.09% (w/v) sodium azide and 2% sucrose. <i>Note that this product is shipped as lyophilized powder to China customers.</i>
Conjugation:	Unconjugated
Storage:	Store at -20°C as received.
Stability:	Stable for 12 months from date of receipt.
Predicted Protein Size:	21 kDa
Gene Name:	armadillo repeat containing 7
Database Link:	NP_078861 Entrez Gene 79637 Human Q9H6L4
Background:	The function of this protein remains unknown.
Synonyms:	FLJ22160
Note:	Human: 100%; Pig: 93%; Rat: 93%; Mouse: 93%; Bovine: 93%; Dog: 87%; Horse: 86%; Guinea pig: 86%



[View online »](#)

Product images:



Host: Rabbit; Target Name: ARMC7; Sample
Tissue: Fetal Lung lysates; Antibody Dilution:
1.0ug/ml