

## Product datasheet for **TA330739**

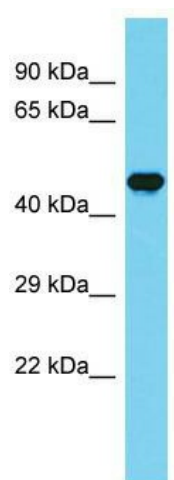
### CCDC121 Rabbit Polyclonal Antibody

#### Product data:

Product Type:	Primary Antibodies
Applications:	WB
Recommended Dilution:	WB
Reactivity:	Human
Host:	Rabbit
Isotype:	IgG
Clonality:	Polyclonal
Immunogen:	The immunogen for Anti-CCDC121 antibody is: synthetic peptide directed towards the middle region of Human CCDC121. Synthetic peptide located within the following region: ENRFFLEYLTNKTEEYTEQPEKVVNSYLQKSGEIERRRQESASRYAEQIS
Formulation:	Liquid. Purified antibody supplied in 1x PBS buffer with 0.09% (w/v) sodium azide and 2% sucrose. <i>Note that this product is shipped as lyophilized powder to China customers.</i>
Conjugation:	Unconjugated
Storage:	Store at -20°C as received.
Stability:	Stable for 12 months from date of receipt.
Predicted Protein Size:	50 kDa
Gene Name:	coiled-coil domain containing 121
Database Link:	<a href="#">NP_001136155</a> <a href="#">Entrez Gene 79635 Human</a> <a href="#">Q6ZUS5</a>
Background:	The function of this protein remains unknown.
Synonyms:	FLJ13646; FLJ43364
Note:	Human: 100%; Horse: 93%



[View online »](#)

**Product images:**

Host: Rabbit; Target Name: CCDC121; Sample  
Tissue: Fetal Brain lysates; Antibody Dilution:  
1.0ug/ml