

Product datasheet for **TA330738**

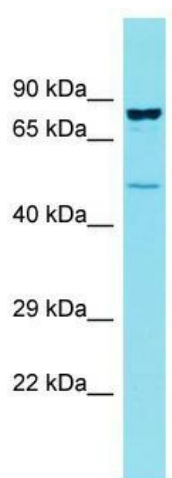
CCDC121 Rabbit Polyclonal Antibody

Product data:

Product Type:	Primary Antibodies
Applications:	WB
Recommended Dilution:	WB
Reactivity:	Human
Host:	Rabbit
Isotype:	IgG
Clonality:	Polyclonal
Immunogen:	The immunogen for Anti-CCDC121 antibody is: synthetic peptide directed towards the middle region of Human CCDC121. Synthetic peptide located within the following region: QLLEESRELHREKLLVQAENRFFLEYLTNKTEEYTEQPEKVVNSYLQKSG
Formulation:	Liquid. Purified antibody supplied in 1x PBS buffer with 0.09% (w/v) sodium azide and 2% sucrose.
Conjugation:	Unconjugated
Storage:	Store at -20°C as received.
Stability:	Stable for 12 months from date of receipt.
Predicted Protein Size:	50 kDa
Gene Name:	coiled-coil domain containing 121
Database Link:	NP_001136155 Entrez Gene 79635 Human Q6ZUS5
Background:	The function of this protein remains unknown.
Synonyms:	FLJ13646; FLJ43364
Note:	Human: 100%; Yeast: 100%; Dog: 85%



[View online »](#)

Product images:

Host: Rabbit; Target Name: CCDC121; Sample Tissue: OVCAR-3 Whole Cell lysates; Antibody Dilution: 1.0ug/ml; CCDC121 is supported by BioGPS gene expression data to be expressed in OVCAR3