

## Product datasheet for **TA330736**

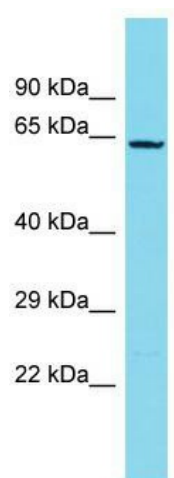
### NDNF Rabbit Polyclonal Antibody

#### Product data:

Product Type:	Primary Antibodies
Applications:	WB
Recommended Dilution:	WB
Reactivity:	Human
Host:	Rabbit
Isotype:	IgG
Clonality:	Polyclonal
Immunogen:	The immunogen for Anti-NDNF antibody is: synthetic peptide directed towards the C-terminal region of Human NDNF. Synthetic peptide located within the following region: NEDQKKREQNQCLGPDIRKKSEKVLCKYFHSQNLQKAVTTETIKGLQPGK
Formulation:	Liquid. Purified antibody supplied in 1x PBS buffer with 0.09% (w/v) sodium azide and 2% sucrose. <i>Note that this product is shipped as lyophilized powder to China customers.</i>
Conjugation:	Unconjugated
Storage:	Store at -20°C as received.
Stability:	Stable for 12 months from date of receipt.
Predicted Protein Size:	62 kDa
Gene Name:	neuron-derived neurotrophic factor
Database Link:	<a href="#">NP_078850</a> <a href="#">Entrez Gene 79625 Human</a> <a href="#">Q8TB73</a>
Background:	NDNF promotes matrix assembly and cell adhesiveness. It promotes neuron migration, growth and survival as well as neurite outgrowth.
Synonyms:	C4orf31; NORD
Note:	Human: 100%; Dog: 93%; Pig: 93%; Rat: 93%; Horse: 93%; Mouse: 93%; Bovine: 93%; Guinea pig: 93%



[View online »](#)

**Product images:**

Host: Rabbit; Target Name: NDNF; Sample Tissue: MCF7 Whole Cell lysates; Antibody Dilution: 1.0ug/ml