

Product datasheet for **TA330735**

C6orf211 (ARMT1) Rabbit Polyclonal Antibody

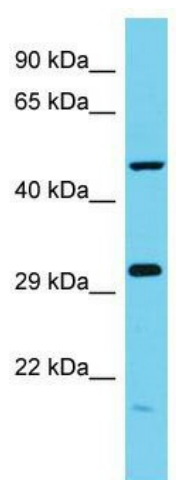
Product data:

Product Type:	Primary Antibodies
Applications:	WB
Recommended Dilution:	WB
Reactivity:	Human
Host:	Rabbit
Isotype:	IgG
Clonality:	Polyclonal
Immunogen:	The immunogen for Anti-C6orf211 antibody is: synthetic peptide directed towards the N-terminal region of Human C6orf211. Synthetic peptide located within the following region: SDGKSRWFYSPWLLVECYMYRRIHEAIIQSPPIDYFDVFKESKEQNFYGS
Formulation:	Liquid. Purified antibody supplied in 1x PBS buffer with 0.09% (w/v) sodium azide and 2% sucrose. <i>Note that this product is shipped as lyophilized powder to China customers.</i>
Conjugation:	Unconjugated
Storage:	Store at -20°C as received.
Stability:	Stable for 12 months from date of receipt.
Predicted Protein Size:	51 kDa
Gene Name:	acidic residue methyltransferase 1
Database Link:	NP_078849 Entrez Gene 79624 Human Q9H993
Background:	The function of this protein remains unknown.
Synonyms:	C6orf211
Note:	Human: 100%; Dog: 86%; Pig: 79%; Rat: 79%; Horse: 79%; Mouse: 79%; Rabbit: 79%; Guinea pig: 79%



[View online »](#)

Product images:



Host: Rabbit; Target Name: C6orf211; Sample
Tissue: MCF7 Whole Cell lysates; Antibody
Dilution: 1.0ug/ml; C6orf211 is supported by
BioGPS gene expression data to be expressed in
MCF7