

## Product datasheet for **TA330734**

### CCNJL Rabbit Polyclonal Antibody

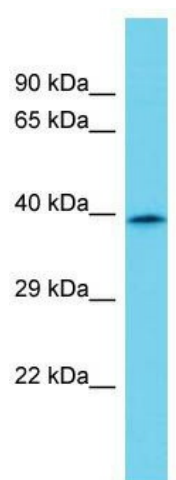
#### Product data:

Product Type:	Primary Antibodies
Applications:	WB
Recommended Dilution:	WB
Reactivity:	Human
Host:	Rabbit
Isotype:	IgG
Clonality:	Polyclonal
Immunogen:	The immunogen for Anti-CCNJL antibody is: synthetic peptide directed towards the C-terminal region of Human CCNJL. Synthetic peptide located within the following region: GQPATTLAQFQTPVQDLCLAYRDSLQAHRSGLLSGSTGSSLHTPYQPLQ
Formulation:	Liquid. Purified antibody supplied in 1x PBS buffer with 0.09% (w/v) sodium azide and 2% sucrose.
Conjugation:	Unconjugated
Storage:	Store at -20°C as received.
Stability:	Stable for 12 months from date of receipt.
Predicted Protein Size:	40 kDa
Gene Name:	cyclin J like
Database Link:	<a href="#">NP_078841</a> <a href="#">Entrez Gene 79616 Human</a> <a href="#">Q8IV13</a>
Background:	The function of this protein remains unknown.
Synonyms:	FLJ14166
Note:	Human: 100%; Horse: 86%; Rat: 79%; Mouse: 79%; Bovine: 79%



[View online »](#)

## Product images:



Host: Rabbit; Target Name: CCNJL; Sample  
Tissue: MDA-MB-4355 Whole Cell lysates;  
Antibody Dilution: 1.0ug/ml